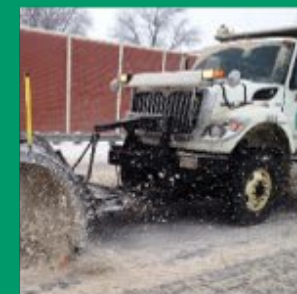
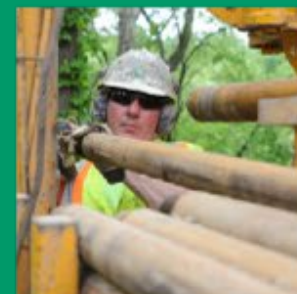
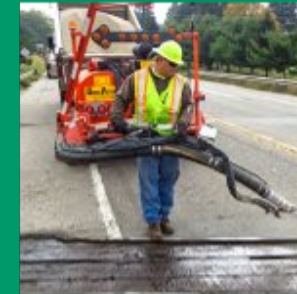


# DOING BUSINESS WITH THE OHIO DEPARTMENT OF TRANSPORTATION

JANUARY 25<sup>TH</sup>, 2023, DIVISION OF ODI



OHIO DEPARTMENT OF  
TRANSPORTATION

# PRESENTATION OVERVIEW

- Ohio Department of Transportation (ODOT) Mission
- Disadvantaged Business Enterprise (DBE) Certification
- Airport Concession Disadvantaged Business Enterprise (ACDBE) Certification
- Small Business Enterprise (SBE) Certification
- Encouraging Diversity, Growth, & Equity (EDGE)
- Mentor Protégé Program
- How to find ODOT Opportunities
- ODI Resources, Updates, & Contacts



## ODOT'S MISSION

To provide easy movement of people and goods from place to place, we will:

---

**Take care of what we have;**

---

**Make our system work better;**

---

**Improve safety;**

---

**Enhance capacity.**

# DIVISION OF OPPORTUNITY, DIVERSITY, & INCLUSION (ODI)

**Lauren Purdy, Deputy Director**

Opportunity, Diversity and Inclusion

Office of Business & Economic  
Opportunity  
Deborah Green, Administrator

DBE & SBE Certification  
DBE Reporting  
DBE, EDGE Goal Setting

DBE Supportive Services

On the Job Training (OJT)  
Program

Office of Civil Rights Compliance  
Kathleen LaPlace, Administrator

Prevailing Wage

Certified Payroll

Commercially Useful Function  
(CUF) Monitoring

Title VI

Americans with Disability Act  
(ADA) / Section 504

Office of Outreach  
Lynn Stevens, Administrator

Statewide, Regional, District  
DBE, SBE, MBE, EDGE  
Resources

ODOT, Business Community  
Resources

DBE & Small Business  
Webinars, Workshops, Events

Workforce Diversity &  
Inclusion

# DIVISION OF OPPORTUNITY, DIVERSITY, & INCLUSION (ODI)



# OFFICE OF OUTREACH CONTACTS



**Michelle Nuvean**

**Northwest Regional  
Outreach Manager**

ODOT Districts 1, 2 & 3  
(419) 345-7828

[michelle.nuvean@dot.ohio.gov](mailto:michelle.nuvean@dot.ohio.gov)



**Acting - Lynn Stevens**

**Southwest Regional  
Outreach Manager**

ODOT Districts 7, 8 & 9  
(614)-644-8436

[lynnette.stevens@dot.ohio.gov](mailto:lynnette.stevens@dot.ohio.gov)



**Lynn Stevens**

**Administrator**

(614) 644-8436

[lynnette.stevens@dot.ohio.gov](mailto:lynnette.stevens@dot.ohio.gov)



**Jennifer Crist**

**Northeast Regional  
Outreach Manager**

ODOT Districts 4, 11 & 12  
(614) 989-8581

[jennifer.crist@dot.ohio.gov](mailto:jennifer.crist@dot.ohio.gov)



**Lorraine Stevens**

**Central & Southeast Regional  
Outreach Manager**

ODOT Districts 5, 6 & 10  
(740) 833-8042

[lorraine.stevens@dot.ohio.gov](mailto:lorraine.stevens@dot.ohio.gov)

# THE OFFICE OF BUSINESS AND ECONOMIC OPPORTUNITY

Applications for DBE and SBE certification are handled within ODOT, while certifications for the MBE, EDGE, and VFBE programs are managed at the Ohio Department of Development DoD

[Click here](#) to find out more about the SBE Certification

[Click here](#) to find out more about the DBE Certification

[Click here](#) to find out more about the MBE Certification

[Click here](#) to find out more about the EDGE Certification

[Click here](#) to find out more about the WBE Certification

[Click here](#) to find out more about the VFBE Certification

# DISADVANTAGED BUSINESS ENTERPRISE (DBE) CERTIFICATION



# DBE BACKGROUND INFORMATION

U.S. Department of Transportation's (USDOT) DBE Program was established to:

- Remedy ongoing discrimination and the continuing effects of past discrimination in federally-assisted highway, transit, and airport contracting markets
- Level the playing field by providing small businesses owned and controlled by socially and economically disadvantaged individuals a fair opportunity to compete for federally funded transportation contracts\*

## Disadvantaged Business Enterprise (DBE) Program

# ODOT'S DBE PROGRAM

- DBE Goal (15.7%) - Federally funded construction projects (highways, bridges, engineering/consulting services, etc.)
- DBE Development Goals - Federally funded consultant contracts
- In FFY22, DBEs were awarded \$159M in federal funds
  - ODOT's prime contractors and prime consultants awarded or committed \$121M in federal funds to DBE subcontractors, subconsultants, and suppliers
  - ODOT awarded \$37M in federal funds to DBE primes.

# LEVERAGING DBE CERTIFICATION

- Agencies that receive Federal Funding FAA, FTA, FHWA funding have DBE goals:
  - ODOT
  - “Local let”- Local public agencies receiving federal \$\$\$ through ODOT
    - Local Cities and Local Counties
  - Transit systems
    - COTA, Greater Cleveland RTA, METRO, TARTA, rural transit
  - Airports
    - John Glenn International, Cleveland Hopkins, Dayton International
  - Interstate Certification
    - Do highway business with surrounding states

# DISADVANTAGED BUSINESS ENTERPRISE (DBE) CERTIFICATION PROCESS

# DBE PROGRAM ELIGIBILITY GUIDELINES

- Presumed socially and economically disadvantaged owner must hold at least 51% ownership interest in DBE applicant firm
- Presumed socially and economically disadvantaged owner must manage and control the DBE applicant firm
- A firm must meet SBA small business size standards. However, if a firm that meets SBA small business size standards has gross receipts exceeding \$28.48 million (averaged over its previous three fiscal years), the firm's DBE certification will only be recognized on FAA-assisted projects--the certification will be inapplicable to ODOT projects as well as any other FHWA- or FTA-assisted projects.
- Personal net worth does not exceed \$1.32 million
- DBE application firm must be an Independent business

# SOCIAL DISADVANTAGE - REBUTTABLE PRESUMPTION

- Members of one or more groups listed are rebuttably presumed to be socially disadvantaged:
  - Women
  - Black Americans
  - Hispanic Americans
  - Native Americans
  - Asian-Pacific Americans
  - Subcontinent Asian-Pacific Americans

# DBE APPLICATION WEB LINK

## [UCP Application | Ohio Department of Transportation](#)

Use the tabs below to apply for Disadvantaged Business Enterprise and Airport Concession Disadvantaged Business Enterprise certification. Instructions are included.

Ohio Firms

Out-of-State Firms

Troubleshooting

If your firm is based in Ohio, please complete the steps below to apply for DBE/ACDBE certification. For further guidance, view our tutorial on [Completing the Uniform Certification Application Submission Form](#).

Note: The Ohio UCP encourages you to apply for DBE certification **if your firm:**

- a. **Is engaged in, or plans to engage in, work directly or indirectly related to transportation infrastructure projects, or**
- b. **Functions as a manufacturer, wholesaler, retailer, or broker that supplies products used in transportation infrastructure projects or in the assembly of transit vehicles.**
- c. **Transportation infrastructure projects include, but are not limited to, the construction, reconstruction, restoration, rehabilitation, and preservation of, and operational improvements to:**

# DBE APPLICATION SUBMIT WEB LINK

Please download a copy of the completed Uniform Certification Application Submission form and save it in your files, along with a copy of everything else you submitted with your application – use the secured link below to submit UCP Application

[Submit Certification Application](#)

The second upload slot is for the NAICS Code/Descriptor Request Form. You can attach all your required and optional supporting documents in one PDF or as separate PDFs. If there isn't enough space to attach supporting documents use the [additional submittal link](#)



# DBE CERTIFICATION PROCESS - TIMEFRAMES

- Intake review - Certifying agency must request missing required documentation within 30 days of submission; if application and all required documentation is submitted by firm, file gets assigned to certification analyst for desk review
- Within 30 days of desk review, additional information may be requested by analyst
- When file is deemed complete, onsite visit will be scheduled
- Certification decision may take up to 90 days\* once application is deemed complete. An extension of time may be needed; firm will be notified. (\*COVID has increased processing time)
- Additional information may be requested at any time during the DBE certification review process

# DBE CERTIFIED, NOW WHAT?

- Once DBE certified, firm will remain certified as long as it meets the eligibility requirements of the DBE Program (49 CFR Part 26)
- DBE certified firms **MUST** submit a Notice of Change within 30 days of change happening in firm
- An Annual No Changes Declaration must be submitted each year on the original date the firm became DBE certified along with complete copies of federal tax returns

# INTERSTATE DBE CERTIFICATION

- A firm must initially obtain DBE Certification in its home state
- Once a firm is certified its owner(s) can seek DBE Certification in other states
- To apply in Ohio, out-of-state firms must submit an Interstate Certification Request form and required documents

# AIRPORT CONCESSION DBE (ACDBE)

# ACDBE

- A business, located on an airport that is engaged in the sale of consumer goods or services to the public
- A business conducting one or more of the following covered activities, even if it does not maintain an office, store, or other business location on an airport:
  - Management contracts and subcontracts
  - A web-based or other electronic business in a terminal or which passengers can access at the terminal
  - An advertising business that provides advertising displays or messages to the public on the airport
  - A business that provides goods and services to concessionaire

# ACDBE

- 3-year average gross receipts cap of \$56.42 million for applicant firm and its affiliates
- The following types of businesses have size standards that differ:
  - Banks and financial institutions: \$1 billion in assets
  - Car rental companies: \$75.23 million 3-year average annual gross receipts
  - Automobile dealers: 350 employees
- Check Apply for ACDBE located on UCP Application, Page 5 (at top) and complete ACDBE Section 5, Page 13

# SMALL BUSINESS ENTERPRISE (SBE) CERTIFICATION

# SMALL BUSINESS ENTERPRISE (SBE)

## Small Business Enterprise (SBE)

### **ODOT's SBE program is a race/gender-neutral set-aside program**

- SBE firms must be prequalified (at bid time) with ODOT in order to bid on SBE set-aside projects.
- The SBE must perform or exercise responsibility for at least 30% of the total cost of its contract with its own workforce.
- **Note:** SBE certification is not intended for, and will provide no benefit to, firms that do not intend to participate in ODOT contracting and consulting activities as prime contractors. ODOT may reach out to firms that do not appear to be good candidates for prime contracting (e.g., trucking firms, supply firms) and encourage such firms to withdraw their SBE certification applications. ODOT's [Outreach](#) staff can assist these firms with locating potential business opportunities among ODOT and its prime contractors.



# SMALL BUSINESS ENTERPRISE (SBE) PROGRAM

- The Small Business Enterprise (SBE) Program was established to ensure that small businesses receive fair opportunities to participate in ODOT contracting and consulting services activities as prime contractors
- Set-Aside program
- Projects under \$2 million

# SBE QUALIFICATIONS

- Heavy Highway Firm
- Personal Net Worth does not exceed \$1.32 million
- Personal adjusted gross income cannot exceed \$350,000, based on the most recent personal federal tax returns averaged over 3 years
- Gross Receipts Cap: 3-year average
  - \$15 Million Construction Firm
  - \$7 million Consultant Firm
- Must be for profit firm

# SBE CERTIFICATION PROCESS

- Complete the SBE application online at:  
<http://www.dot.state.oh.us/Divisions/ODI/SDBE/Pages/SBE.aspx>  
then click on “**SBE Certification Application**” <https://signer-gov.esignlive.com/ft?token=OXFKUDJ1M3dGLVJoMWhZOFdHRE93Sjdaa2c0PSZmYWxzZQ>
- 3 years of Federal *Business* Taxes with all schedules attached for applicant firm and its affiliates
- 3 years of Federal *Individual* Taxes with all schedules attached
- Personal Net Worth Form
- An onsite visit will be required

# SBE SET-ASIDE PROJECTS

# SAMPLE SBE PROJECTS

- Bridge Repair
- Bridge Replacement
- Two or Four Lane Resurfacing
- Culvert Replacement or Repair

# SBE SET-ASIDES PROJECT TYPES

Language Translation



What is ODOT?  
ABOUT US

All About  
TRAVELING

ODOT  
PROJECTS

Know Our  
PROGRAMS

Doing  
BUSINESS

ODOT / Know Our Programs / Business & Economic Opportunity / Small Business Enterprise (SBE) / SBE Set-Aside Projects



Business &  
Economic  
Opportunity

## SBE Set-Aside Projects

March 26, 2020 | [ODOT](#)

**SBE Set-Aside Projects - Contracts**



**SBE Set-Aside Projects - Consultant  
Services**



HOME

SMALL BUSINESS

[SBE Set-Aside  
Projects | Ohio  
Department of  
Transportation](#)

# SBE SET-ASIDE PROJECTS

## [SBE Set-Aside Projects | Ohio Department of Transportation](#)

### SBE Set-Aside Projects - Contracts

#### List of SBE Set-Aside Projects from the Office of Contracts

The information in this section applies to the projects at the link above.

- Your firm must be SBE Certified AND Prequalified with ODOT at the time of bid.
- Find out more about the ODOT [SBE Program](#) and [Prequalification](#).
- The SBE certified contractor awarded this project will be the prime contractor for the project and must **self-perform at least 30% of the work on the project.**
- [Proposal Note 019](#)
  - Please review the requirements for bidding online for ODOT projects.
- Bidders use Expedite Bid to fill out bids and then bid online. Learn how to download Expedite Bid below, and view the [Expedite Bid instructions](#) for more info.

### Expedite Bid Software

To download Expedite Bid, please follow these steps:

1. Go to [www.bidx.com](http://www.bidx.com) and log in.
2. Go to the agency home page. You may need to select the agency you want to submit a bid to and click Go.
3. Click on the Expedite link in the Downloads box on the upper right-hand side of the home page.
4. Fill out the form entirely (please enter just your first name in the name field) and press the Download Expedite button.
5. You will see a list of agencies. Scroll down to your desired agency and click on the Expedite Bid software link to download the correct version to your computer.

### SBE Set-Aside Projects - Consultant Services

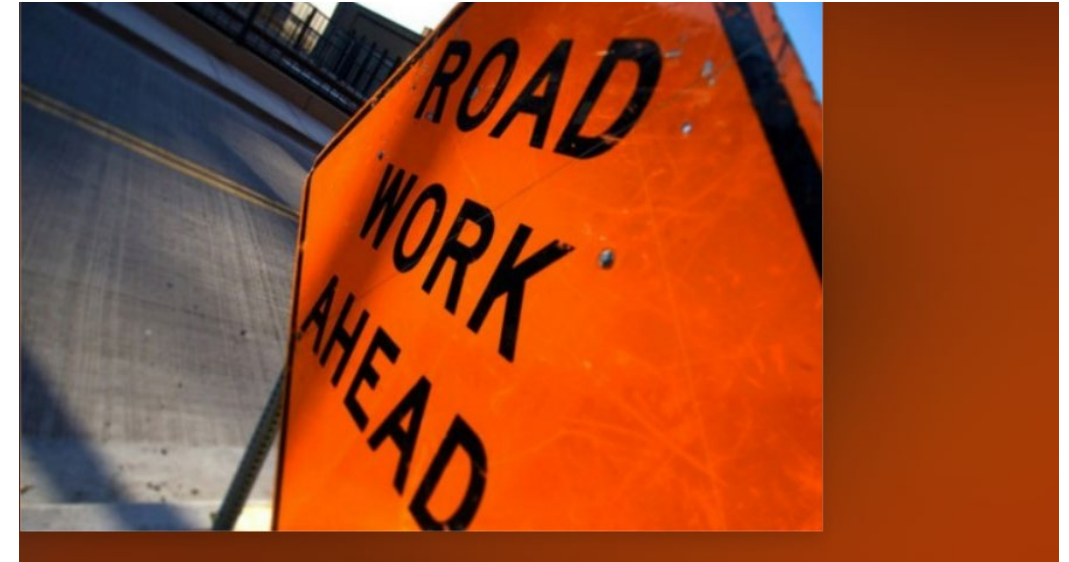
#### Go to the Office of Consultant Services

SBE set-aside projects administered by the Office of Consultant Services are incorporated into that office's usual programs of projects for consultants (i.e., programmatic). At the [Office of Consultant Services webpage](#), scroll down until you see FUTURE CONSULTANT PROGRAM & SELECTION SCHEDULE in the left-hand navigation bar. Below this text are a number of links. Open any of the links labeled *Future Programmatic [date]* and use your web browser's search function to search for *SBE Set-aside*. Note that SBE set-aside information will not yet be available for some future programmatic. Information on submitting bids and prequalification requirements is available on the same webpage.

# SBE SET-ASIDE PROJECTS

## SBE Set-Aside Projects – Contracts

- Your firm must be SBE Certified AND Prequalified with ODOT at the time of bid.
- The SBE certified contractor awarded this project will be the prime contractor for the project and must self-perform at least 30% of the work on the project.
- Bidders use Expedite Bid to fill out bids and then bid online.



[SBE Set-Aside Projects | Ohio Department of Transportation](#)



# SBE SET-ASIDE PROJECTS

## Expedite Bid Software

To download Expedite Bid, please follow these steps:

1. Go to [www.bidx.com](http://www.bidx.com) and log in.
2. Go to the agency home page. You may need to select the agency you want to submit a bid to and click Go.
3. Click on the Expedite link in the Downloads box on the upper right-hand side of the home page.
4. Fill out the form entirely (please enter just your first name in the name field) and press the Download Expedite button.
5. You will see a list of agencies. Scroll down to your desired agency and click on the Expedite Bid software link to download the correct version to your computer.

Bid Express website (<http://www.bidx.com>)

## Bid Express®

infotech

[Training Center](#) [Terms of Use](#)

Bidding Services

Order

Policies

Questions/Help

### Start Traveling New Roads

Find the opportunities that matter to your business in our first phase of Bid Express: New Roads.

Opt-in to try the new experience today!



SELECT A U.S. AGENCY:

Select a U.S. Agency

Select a Canadian Agency

AGENCIES

#### Overview

Increase efficiency and save money in bidding for [your agency](#) and bidders with Internet bidding. Get more bidders and more competitive bids. Omit errors and reduce staff time. Integrate with [Appia®](#) or AASHTO [AASHTOWare Project®](#) software for a complete solution. Provide plan sheets, bid tabs and more!

BIDDERS

#### Overview

Get [all the bidding tools you need](#) in one place. Save time and money with secure, online bid submission, [Online Plan Sheets](#) service, [Analysis Suite](#) service, and quote exchanges with subs through the [Small Business Network](#).

SUBS AND SUPPLIERS

Get in-the-know with easy access to proposal information. Use key word searches to find projects to bid on and easily find the plan holders for those jobs. Provide instant quotes to primes via [Small Business Network](#).

Copyright © 2023 Infotech®. All rights reserved.



# SBE SET-ASIDE PROJECTS

## SBE Set-Aside Projects – Consultant Services

### Announcements

Read the latest notices and news from Consultant Services here. Would you rather see these announcements as a running PDF? View [the PDF version](#).

#### 1-10-23 Posting Date

One item: *Additional Information for Brent Spence Bridge Corridor Project PID No. 116649*

#### 1-9-23 Posting Date

Three items: *Information for Brent Spence Bridge Corridor Project PID No. 116649; Change to the January Programmatic Selection Group; & Office of Transit: Franklin & Licking County Transit Study*

[VIEW MORE ANNOUNCEMENTS >](#)

### Project Notifications & Future Programmatic

#### [View All ODOT Project Notifications](#)

A listing of current notifications for consulting opportunities on ODOT projects.

#### [View All Local Project Notifications](#)

A listing of current notifications for consulting opportunities on local projects.

#### [Future Programmatic](#)

Programmatic outline our anticipated consultant programs over the next several months.



### Prequalification Information and Supporting Materials

[Office of Consultant Services webpage](#)

# ENCOURAGING DIVERSITY, GROWTH, & EQUITY (EDGE)

# ENCOURAGING DIVERSITY, GROWTH, & EQUITY (EDGE)



## ODOT's Goal

5% of highway construction & design contracts that are 100% state funded, such as bridge repair, highway lighting, resurfacing, design services.

# ENCOURAGING DIVERSITY, GROWTH, & EQUITY (EDGE)

## [Encouraging Diversity Growth & Equity Program \(EDGE\) Link](#)

### Benefits of EDGE Certification

- Procurement Preference for Contracts
- Financial and Bonding Assistance
- Management and technical Assistance

### Managed by

- Ohio Department of Development

### Find Opportunities

- [Check Procurement and Construction bid announcements](#)

# HOW TO LOCATE ODOT OPPORTUNITIES

# CONSTRUCTION PROJECTS

## Bidding Construction Projects



ODOT / Working / Contracts / [Bidding Construction Projects](#)

## Bidding Construction Projects

Information and support to interested bidders on ODOT construction projects. Find current and upcoming bidding documents and letting details including Addenda, Project Files, Plans and Proposals, Planholder Lists, Bid Letting Pamphlet, Notices, and links to Prebid Questions, Proposal Notes & Supplemental Specifications, and other support material.

### Contact

Nate Fling, Administrator  
[Office of Contracts Contact List](#)

### Quick Links



#### Bidding Documents

Search addenda, planholder lists, EBS files, plans and proposals for projects.



#### Prebid Questions

Visit the Prebid Forum to ask questions and find answers on upcoming projects.



#### Upcoming Projects

Long-range forecast of projects expected to be sold over two years in the future.



#### Sold Projects

Award sheets, DBE goals, approved subcontractors, and other resources.

### Email Sign-Up

- Subscribe to Planholders List**  
Get details and connect with planholders for specific projects
- Design Build Consultant Information**  
Provide details on firms participating on design-build projects

### Notices

# CONTRACTS SUPPORT & RESOURCES

## Additional Bidding Resources



### **Bid Express**

Bid Express is used to submit construction project bids online. Download the required bidding software from the Bid Express website.



### **Bid Pamphlet**

Electronic pamphlet information reporting by letting date and project number.



### **Existing Plans, Design Files, Office Calcs & Other Files**

ODOT provides the attached information as a courtesy to those who bid on our construction projects. The information is NOT, nor shall it be considered, a part of the bidding documents.



### **Disadvantaged, Minority and Small Business Certifications**

The Office of Business & Economic Opportunity assists in the certification of DBE, EDGE, MBE, SBE, and VFBE firms.



### **Existing Plans, Design Files, Office Calcs & Other Files**

ODOT provides the attached information as a courtesy to those who bid on our construction projects. The information is NOT, nor shall it be considered, a part of the bidding documents.



### **Disadvantaged, Minority and Small Business Certifications**

The Office of Business & Economic Opportunity assists in the certification of DBE, EDGE, MBE, SBE, and VFBE firms.



### **Prequalification & Certification**

Bidders must be prequalified in order to bid on a project. Learn more about prequalification here.



### **Supplemental Specs, Proposal Notes, Supplements**

Access to the complete current and archived versions of Supplemental Specs, Proposal Notes and Supplements.



# PROGRAMMATIC

# PROGRAMMATIC

## View Future Programmatic



**Future Programmatic:  
5/8/2023**

View the anticipated consultant program for May 8, 2023. Updated regularly.



**Special Programmatic:  
6/5/2023**

View the anticipated special Brent Spence Bridge Corridor consultant program for June 5, 2023. Updated regularly.



**Future Programmatic:  
9/5/2023**

View the anticipated consultant program for Sept. 5, 2023. Updated regularly.



**Future Programmatic:  
Beyond 9/5/2023**

View the anticipated consultant program beyond Sept. 5, 2023. Updated regularly.

[Future Programmatic | Ohio Department of Transportation](#)

# PROGRAMMATIC

Programmatic 01/17/2023 with DBE and EDGE Goals (Projected Listing)  
 Sorted by District and PID #  
 (Subject to Departmental Changes)

Programmatic 01/17/23 Goals  
 Date Revised: 12/30/22

Dist	PID #	Proj. Name (ie CRS)	Project Description	Consultant Work Description	Selection Category "Other"	Sale Date	Construction Cost	Goal Type	Goal %
2	117677	LUC IR 475 4.40 Interchange	1026 bridge over IR-475 to accommodate the necessary lanes associated with the diverging diamond interchange. Add multiuse path through interchange. Perform necessary related work.			10/01/26	\$22,881,000	EDGE	12%
2	117678	WOO US 20 2.55 Interchange	A project to improve the safety performance at the interchange of I-75 and US-20/23 (Fremont Pike) in Wood County by constructing a diverging diamond interchange.	Reconfigure the interchange at I-75 and US 20/23 (Fremont Pike) to a Diverging Diamond Interchange. Geotechnical, environmental, survey, lighting and design services required.		07/01/26	\$19,500,000	DBE	12%
3	110691	D03 CO Inspection FY2023(B)	District 3 Wide Construction Inspection January 2023 Programmatic	Districtwide Construction Inspection					
3	117028	MED IR71 IR271 Study	Perform a planning study related to the movement of traffic from IR 271 southbound to IR 71 northbound and IR 71 southbound to IR 271 northbound.	Perform SPR Study at MED IR 71 & IR 271				SBE Set Aside	

## [Future Programmatic | Ohio Department of Transportation](#)

# ODOT MBE SET-ASIDE CONTRACT OPPORTUNITIES

# ODOT MINORITY BUSINESS ENTERPRISE SET-ASIDE

## Current Contracts

800-23	Aggregate (MBE Bidders Only)	3/1/2022	2/28/2023	Maintenance Mgmt	800-23	Yes
801G-23	Asphalt Concrete, Bituminous Mixes, Equipment Rental, and Material Hauling (MBE Bidders Only)	3/11/2022	2/28/2023	Maintenance Mgmt	801G-23	Yes
801L-23	Liquid Asphalt (MBE Bidders Only)	4/18/2022	3/31/2023	Maintenance Mgmt	801L-23	Yes
802-23	Snowplows	12/13/2022	12/31/2023	Equipment Mgmt	802-23	Yes
823-23	Quick Setting Concrete Patching Material (MBE Set-Aside)	1/1/2023	12/31/2023	Maintenance Mgmt	823-23	Yes
834-23	Mobile Anti-Icing/De-Icing Systems (MBE Vendors Only UNSPSC: 24111800)	11/23/2022	11/30/2023	Equipment Mgmt	834-23	Yes
839-22	Glass Beads (MBE Bidders Only)	7/1/2022	6/30/2023	Roadway Engineering	839-22	Yes
840-22	Lawn care and Mowing Service - MBE	4/1/2021	3/4/2023	District 12	840-22	No
865-23	Live Bottom Dump Bodies (MBE Set-Aside)	11/2/2022	11/30/2023	Equipment Mgmt	865-23	Yes
888-23	Traffic Paint (MBE Bidders Only)	6/8/2022	5/31/2023	Roadway Engineering	888-23	Yes
889-23	Plastic Tubing, Pipe, & Fittings (MBE Vendors Only)	1/9/2023	12/31/2023	Maintenance Mgmt	889-23	Yes
896-23	Highway Signs	7/21/2022	7/31/2023	Sign Shop	896-23	Yes
899-23	Crack & Joint Sealant (MBE Only)	6/1/2022	5/31/2023	Maintenance Mgmt	899-23	Yes

# NON-DBE OPPORTUNITIES WITH ODOT

# NON-DBE OPPORTUNITIES WITH ODOT

Facility Construction: <https://ofcc.ohio.gov/>

State Term Contracts - Contracts that are procured through the Department of Development for all State Agencies to utilize: [State of Ohio Office of Procurement Services | State of Ohio Procurement](#)

State of Ohio's IT Staff Augmentation (OH ITSA) program: [IT Staff Augmentation | Department of Administrative Services \(ohio.gov\)](#)

# MENTOR PROTÉGÉ'



# MENTOR PROTÉGÉ”



What is ODOT?  
**ABOUT US**

All About  
**TRAVELING**

ODOT  
**PROJECTS**

Know Our  
**PROGRAMS**

Doing  
**BUSINESS**

Please Enter Your  
Location

ODOT / Know Our Programs / Business & Economic Opportunity / Disadvantaged Business Enterprise (DBE) / DBE Mentor/Protégé Program

## DBE Mentor/Protégé Program



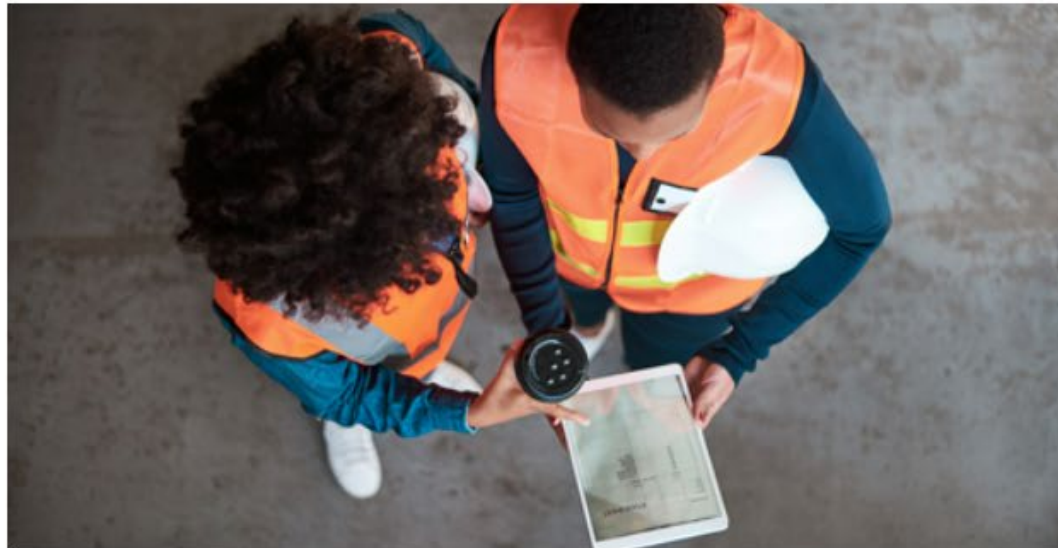
Business & Economic  
Opportunity

HOME

SMALL BUSINESS  
ENTERPRISE (SBE)

DISADVANTAGED BUSINESS  
ENTERPRISE (DBE)

OHIO UNIFIED CERTIFICATION



Expand All Sections

LAUNCH

Supportive Services Application and Needs  
Assessment

### Attachment



Mentor/Protégé Program  
Document (.pdf)

DOWNLOAD

Share this



# MENTOR PROTÉGÉ”

## For more information

[Supportive Services - General Email](#)

[Mica Flanagan](#), *Supportive Services Manager*

(614) 466-4325

Go to

DBE Supportive Services

[DBE Mentor/Protégé Program | Ohio Department of Transportation](#)

# ODI RESOURCES

# ODI RESOURCES

## Outreach | Ohio Department of Transportation

- Bi-weekly construction bid opportunities with goal information
- Monthly Newsletters
- [ODI Outreach Contact Page](#)

# ODI RESOURCES

## Outreach | Ohio Department of Transportation

### Featured Outreach Resources



#### **DBE/EDGE Capability Statements**

See capability statements showcasing DBE- and EDGE-certified firms who have chosen to participate.



#### **Matchmaker Documents**

Click here to access documents from recent matchmaker events.



#### **Civil Rights Transportation Symposium**

This annual event explores the value that diversity and inclusion brings to both the industry and the state.



#### **Small Business Resource Library**

Learn how your firm can work with ODOT, helping us provide safe and easy movement of people and goods from place to place.



#### **Transit Procurement Opportunities**

Procurement solicitations from ODOT Transit and Ohio's rural transit agencies.

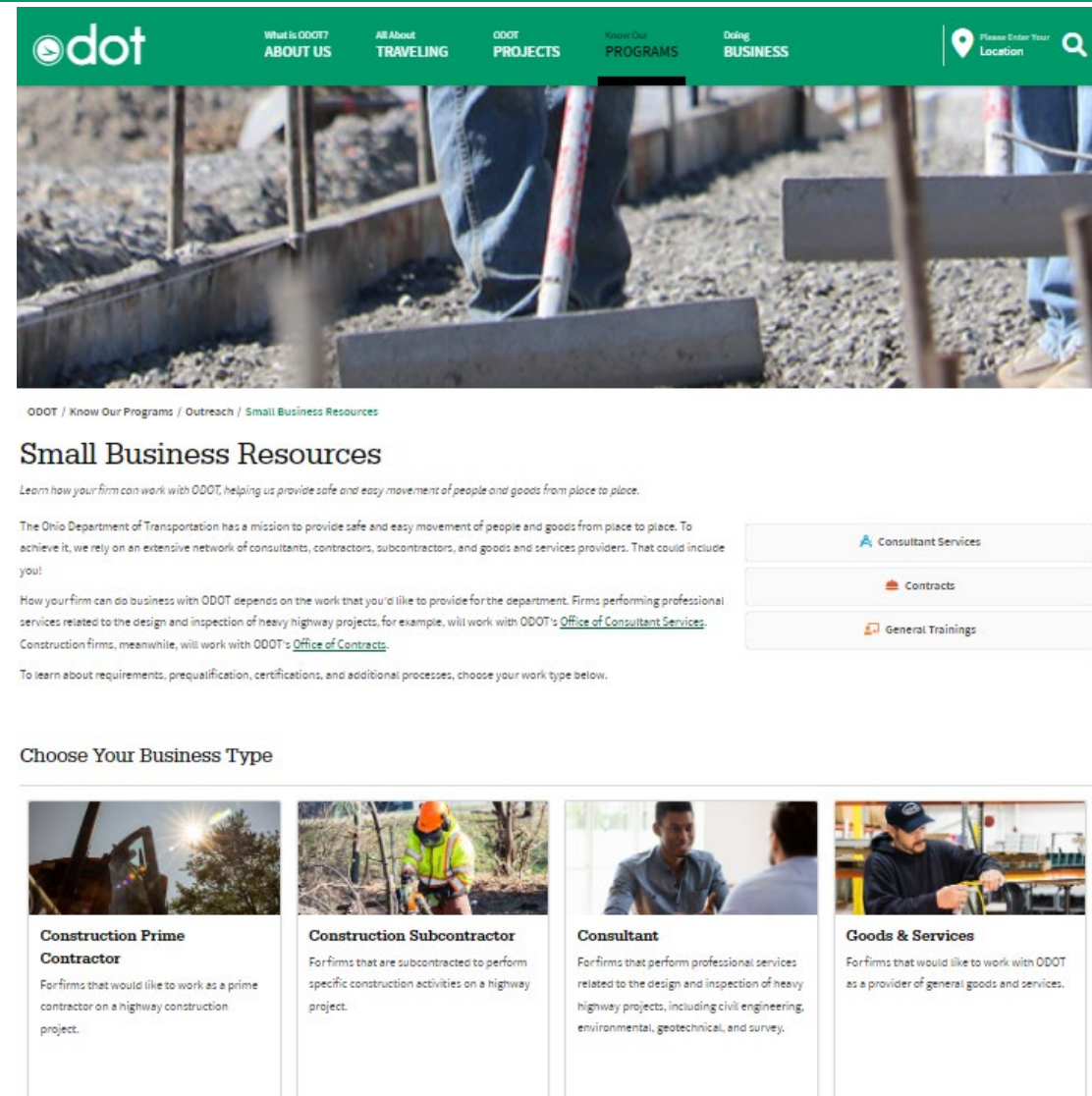


#### **Ohio Unified Certification Program (UCP)**

A one-stop shop for firms seeking Disadvantaged Business Enterprise and Airport Concession Disadvantaged Business Enterprise certification.

# ODOT SMALL BUSINESS LIBRARY

- Learn about requirements, prequalification, certifications, and processes relative to small business contracting
- Great resource that provides videos, questions and answers
- Ideas for additional videos? Please let us know by emailing [Outreach@dot.ohio.gov](mailto:Outreach@dot.ohio.gov)
- Link: [Small Business Resource Library | Ohio Department of Transportation](#)



dot

What Is ODOT? ABOUT US All About TRAVELING ODOT PROJECTS Know Our PROGRAMS Doing BUSINESS

Please Enter Your Location

ODOT / Know Our Programs / Outreach / Small Business Resources

## Small Business Resources

Learn how your firm can work with ODOT, helping us provide safe and easy movement of people and goods from place to place.

The Ohio Department of Transportation has a mission to provide safe and easy movement of people and goods from place to place. To achieve it, we rely on an extensive network of consultants, contractors, subcontractors, and goods and services providers. That could include you!

How your firm can do business with ODOT depends on the work that you'd like to provide for the department. Firms performing professional services related to the design and inspection of heavy highway projects, for example, will work with ODOT's [Office of Consultant Services](#). Construction firms, meanwhile, will work with ODOT's [Office of Contracts](#).





To learn about requirements, prequalification, certifications, and additional processes, choose your work type below.

Consultant Services

Contracts

General Trainings

### Choose Your Business Type

 <p><b>Construction Prime Contractor</b></p> <p>For firms that would like to work as a prime contractor on a highway construction project.</p>	 <p><b>Construction Subcontractor</b></p> <p>For firms that are subcontracted to perform specific construction activities on a highway project.</p>	 <p><b>Consultant</b></p> <p>For firms that perform professional services related to the design and inspection of heavy highway projects, including civil engineering, environmental, geotechnical, and survey.</p>	 <p><b>Goods &amp; Services</b></p> <p>For firms that would like to work with ODOT as a provider of general goods and services.</p>
--	---	---	---



**ODOT DBE  
Supportive  
Services**



**DBE Supportive Services**  
**800.423.7058**  
**info@ohiodbesupport.com**



# ODI UPDATES



# ODI UPDATES (COMING SOON!)

- We are planning our very first **Ohio MBE/Diverse Business Opportunity Expo**: The Ohio Department of Transportation (ODOT) will host the Inaugural Ohio MBE/Diverse Business Opportunity Expo (“MBE Expo”) at the Ohio Expo Center & State Fairgrounds in Columbus tentatively Mid June 2023.
- Brent Spence Bridge Project, \$2.8B and currently working on setting the DBE goal.



# ODI CONTACTS

# WHO DO I CONTACT WITH QUESTIONS

- Your Regional Outreach Manager is your central contact to all things related to doing business with ODOT
- Outreach can be a liaison between you and the certification office
- General Outreach Email - [Outreach@dot.ohio.gov](mailto:Outreach@dot.ohio.gov)

# OFFICE OF OUTREACH CONTACTS



**Michelle Nuvean**

**Northwest Regional  
Outreach Manager**

ODOT Districts 1, 2 & 3  
(419) 345-7828

[michelle.nuvean@dot.ohio.gov](mailto:michelle.nuvean@dot.ohio.gov)



**Acting - Lynn Stevens**

**Southwest Regional  
Outreach Manager**

ODOT Districts 7, 8 & 9  
(614)-644-8436

[lynnette.stevens@dot.ohio.gov](mailto:lynnette.stevens@dot.ohio.gov)

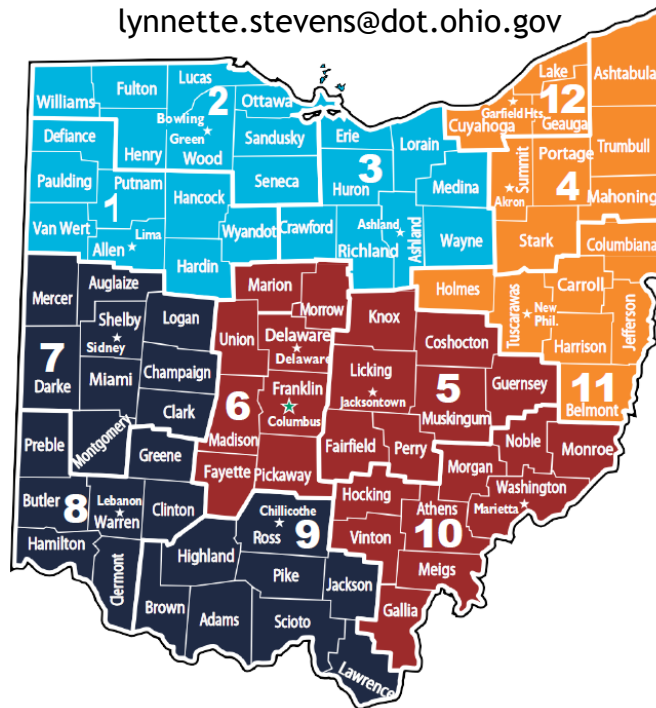


**Lynn Stevens**

**Administrator**

(614) 644-8436

[lynnette.stevens@dot.ohio.gov](mailto:lynnette.stevens@dot.ohio.gov)



**Jennifer Crist**

**Northeast Regional  
Outreach Manager**

ODOT Districts 4, 11 & 12  
(614) 989-8581

[jennifer.crist@dot.ohio.gov](mailto:jennifer.crist@dot.ohio.gov)



**Lorraine Stevens**

**Central & Southeast Regional  
Outreach Manager**

ODOT Districts 5, 6 & 10  
(740) 833-8042

[lorraine.stevens@dot.ohio.gov](mailto:lorraine.stevens@dot.ohio.gov)

# QUESTIONS

